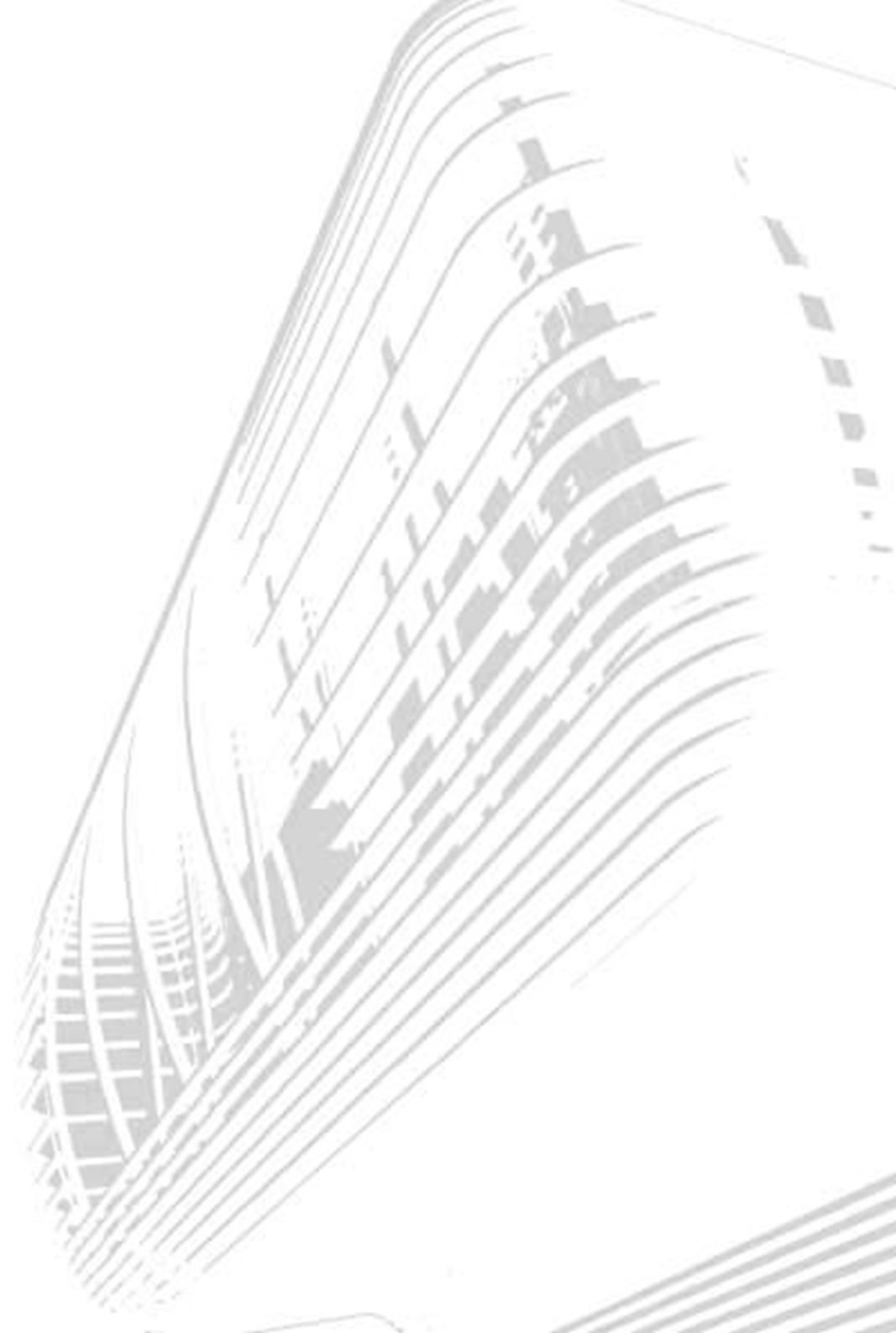


FINCUBE





A NEW LIVING EXPERIENCE

The small+smart house for the rural landscape

The visionary living concept and the design of the Fincube are developed by the internationally famous designer Werner Aisslinger. He initially translated his vision by inventing the loftcube, a solid and mobile living unit, a futuristic and mobile home without wheels. The Loftcube, as the predecessor of the Fincube, was designed in response to the shortage of low priced living space in urban regions with the intention to use the flat roofs of high rise buildings as locations for the Loftcube.

Following the designer's vision, we discovered the huge potential of the cube for the landscape and developed a genuine and sustainable living unit fitting in the rural and alpine landscape. Next to the vision of temporary living, the aspect of sustainability and the reduction of environmental intervention to a minimum had top priorities in the planning and realization.

In collaboration with Werner Aisslinger and his design studio we developed a completely novel eco-house system not only unique in terms of its visual design but also in harmony with the nature: the Fincube.

A temporary and sustainable construction

The Fincube is an individually designed and multifunctional living unit, made of natural and local materials. By providing temporary accommodation and design, it is developed to cope with the demands of a mobile society and its nomadic lifestyle.

The Fincube represents a connection of sustainability in architecture and exclusiveness in design. The interior of the Fincube offers space for individuality and can be freely designed according to the wishes and requirements of the customer.

The Fincube enables the temporary use of land without harming the nature. After a few years of use, the Fincube can easily be removed, the building is fully recyclable, the plot can be used for other purposes or returned to the nature.

The Fincube – a lifestyle

The temporariness of the Fincube is developed in response to the changing living and working conditions of a mobile society.

Future living concepts have to consider the increasing mobility and flexibility of people. This is the intention of the Fincube as a temporary accommodation.

At the same time sustainability in combination with post-materialistic value orientation are becoming more and more important. Therefore, the Fincube represents a connection of ecology and architecture, individuality, emotionality and simplicity.

The arrangement of the rooms is marked by efficiency, sustainability and functionality and allows privacy as well as working space – without renouncing comfort. The room and its furniture achieve the impression of being authentic and personal.

The building combines sustainability and innovative techniques.

For everybody, who appreciates formal purism, special design, uniqueness and fineness.

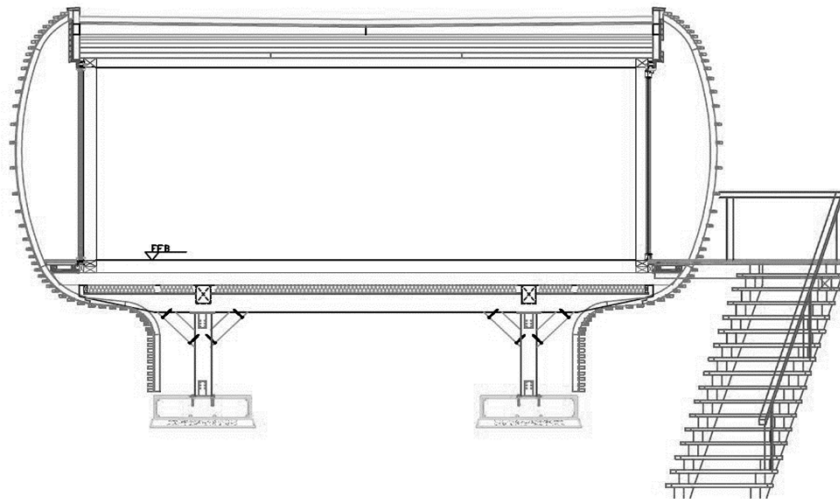
VIEW OVER THE SOUTH TYROLIAN DOLOMITES



The living unit

The Fincube is an entirely independent living unit with a 360-degree glass facade and 47 square meters of individually usable living space at its best.

The flat roof can either be greened or upgraded with a photovoltaic system for generating electricity. The wood slat cladding features a modern interpretation of existing elements of regional architecture and at the same time provides sunblind and visual protection. It turns the Fincube into an architectural landmark.



Engineering and assembling

The Fincube's base is formed by a wood frame construction on four static supporting points, the building envelope with picture-windows and an installation core.

The construction of a Fincube is realized very sustainably and always implies that environmental intervention is reduced to a minimum. Simple soil sealing is limited to four foundation points of 0.5 m² each and allows a gentle use and economically acceptable return of the used area.

According to the intended use, connections for cold water, rainwater, waste water, and electricity are required.

With its innovative and modular wood construction the Fincube can be put up on the requested spot within a few days, and will be ready for occupancy already 70 days after production release.

SUSTAINABILITY & AUTHENTICITY

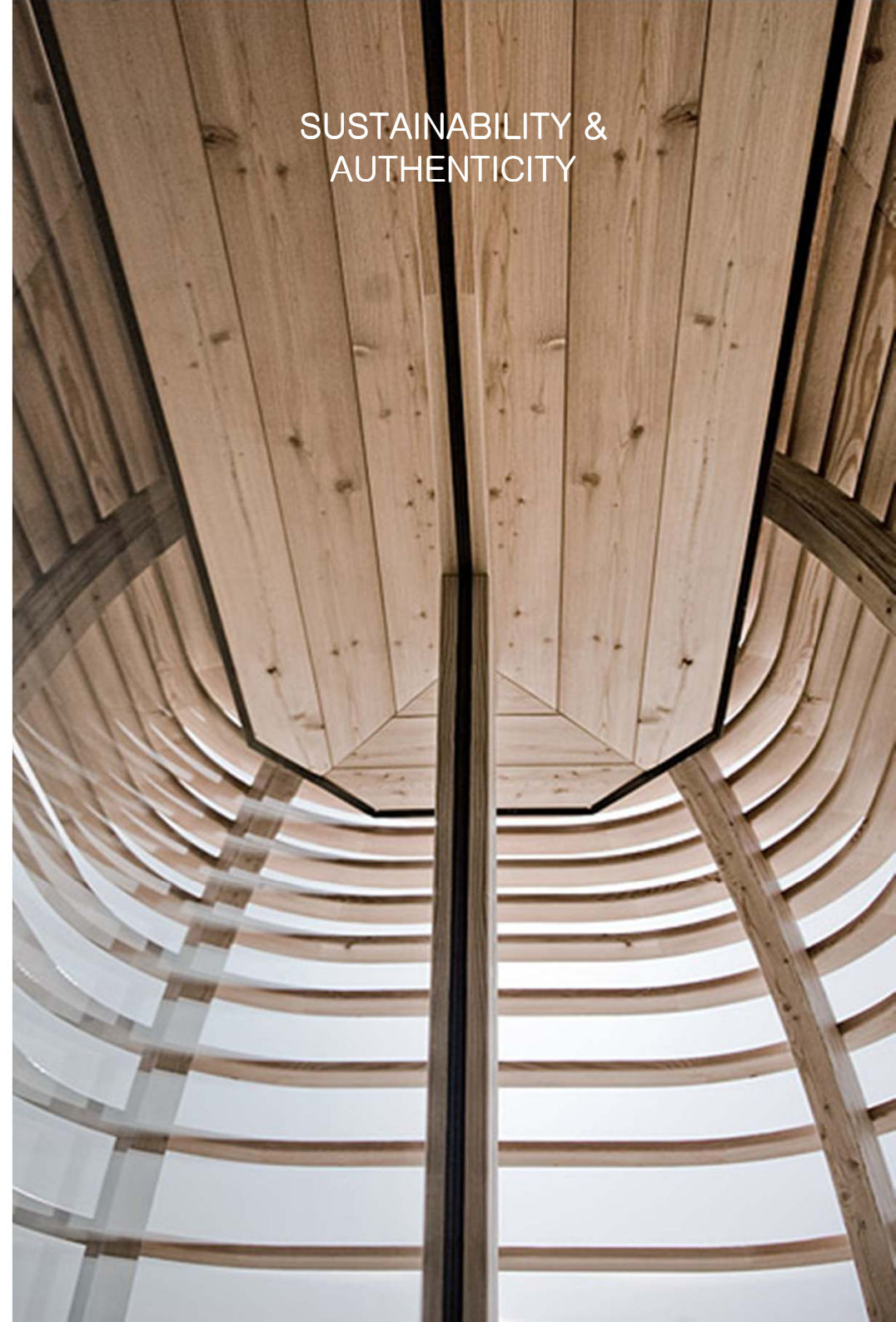
Material

European larch wood, which is commonly used in the Alpine region, is used for the building and the interior fittings. In order to provide the space with a natural fragrance, single furnishing elements are made of Swiss stone pine wood. The special aroma of this kind of wood gives peace and wellbeing.

Architecture and design bear the marks of the designer Werner Aisslinger.

Production – South-Tyrolean handcraft

The Fincube is exclusively produced in South Tyrol. South-Tyrolean handcraft is famous beyond its boundaries. Especially, the wood processing industry features specific know-how that can be equalled by no other in Europe.





Interior

The modular and double-sided usable wall and function panels enable individual room layouts.

The precisely optimized interior enables to use the available area as efficiently as possible and at the same time provides luxury and generous space.

The 360-degree glass fronts, innovative lighting technology and natural materials generate unique ambiance changing according to day-times and providing undreamed quality of living.



The Fincube – a multifunctional unit

Living space

The Fincube can be used as an exclusive guesthouse situated in your garden or as a proper residence in a holiday destination, as an accommodation facility for the grown-up second generation or simply as an annex to your mansion. The advantages of a mansion next to the main house are perfectly obvious: new living space is made available without complex reconstruction of the main building.

When the Fincube is used as a space for living, the function panels are situated in the middle of the room, and the four areas (living room and kitchen, bedroom and bathroom) open up to the outside.

Well-designed simplicity and functionality of the space concept cover the entire construction offering a residence without having to renounce comfort.





Office space

Creativity and mind grow in the right atmosphere.

The basic structure of the Fincube fits perfectly for office purposes or for a conference room. The construction can be established as an individual unit next to an existing office building or a complex. Even the flat roof of a business complex can serve as a location.

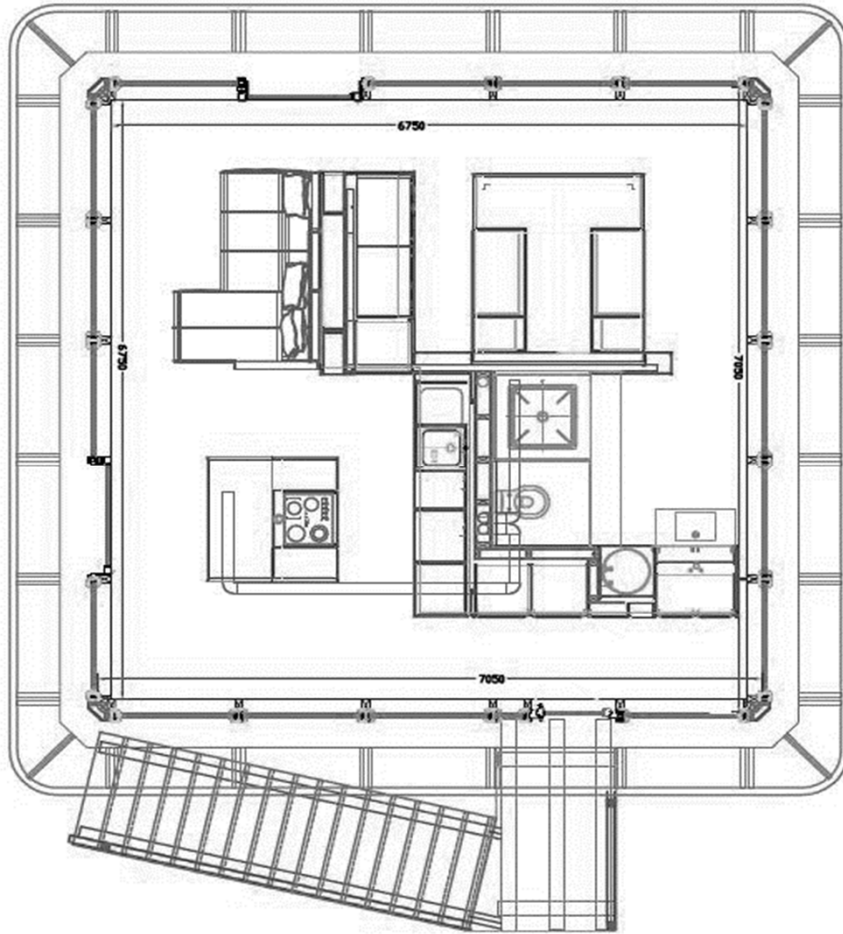
For freelancers the Fincube offers office space right next to your house in your garden, which provides a spatial separation of work life and private life and therefore contributes to a good work-life-balance.

Space for events

The Fincube as a show room, reception area or a room for product presentations – individually designed.

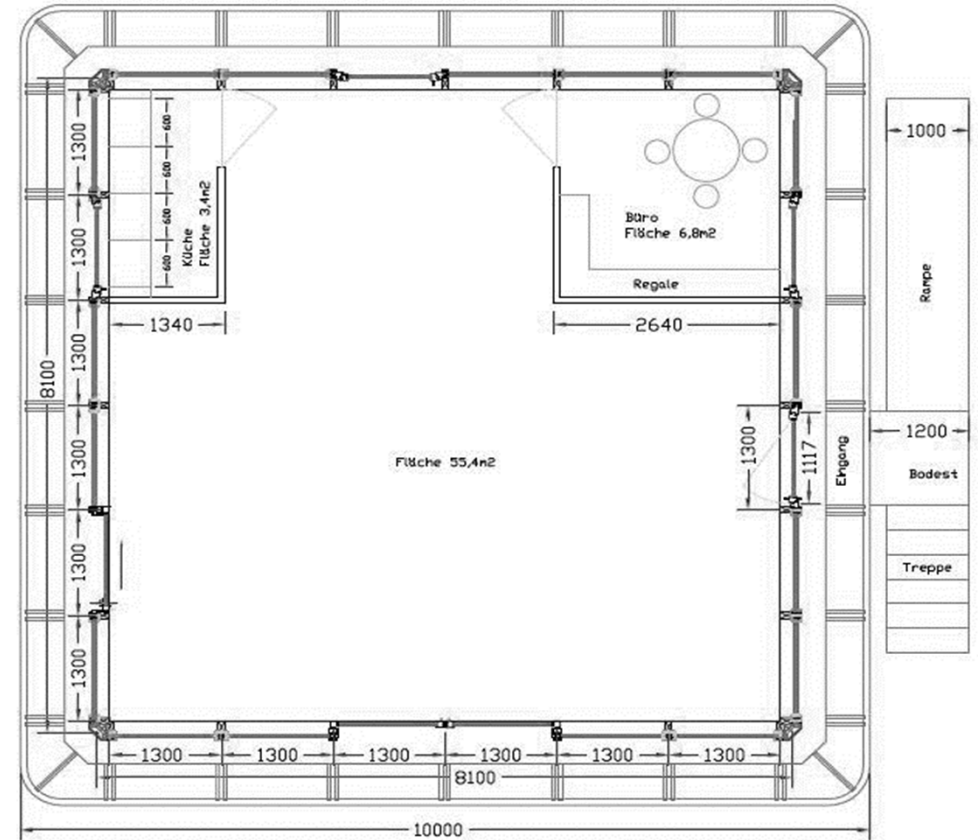
The flexible structure enables temporary availability of a room for one-time events. Culture, sports, or business – outstanding pure but emotional aesthetics adds a special touch to the event.





Living space

The living unit with a kitchen, living room, bedroom and bathroom – 47 m².



Space for events

With all technical features for all types of events and presentations.

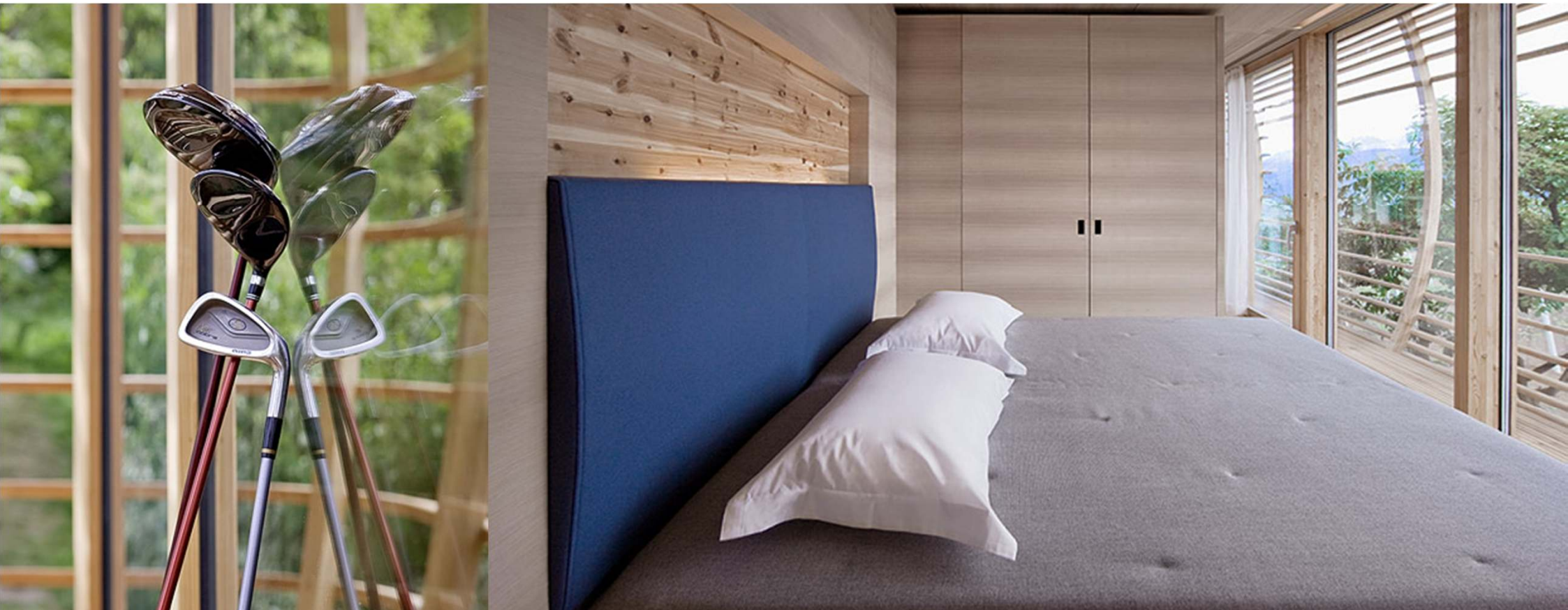
Recreational space

The Fincube is also designed for tourist facilities.

With a Fincube the guest is offered his own “four windows” and independence from traditional hotel structures. Moreover, the aspects of design and architecture are perfectly met, which are crucial factors for today’s sophisticated guests.

The unit is suited for quantitative and qualitative extensions of existing resort hotels or a Fincube village.

A Fincube village consists of different Fincubes used as suites with a main building for the public facilities like reception, restaurant and spa and wellness area.



Individual design

Depending on the intended use, the Fincube varies in its size, interior furnishings and design, which will be adjusted to intended purposes and individual requirements.

Important for the Fincube is its cubic form, which turns it into an architectural landmark. Apart from wood, the Fincube features materials such as glass, steel (foundation and mountings), ceramics and corian (bathrooms).

According to the order of the customer, the Fincube can be delivered turnkey and ready for occupancy, with or without furnishings.

If furnishings are requested, it will be planned in cooperation with the customer. Because of the individual room layout and individual design of the interior, every Fincube is unique.



Suggested price for the sample house

Type:	a modern, wooden eco-house system
Energy certificate:	low energy building design
Number of rooms::	living room, kitchen, bedroom, bathroom
Dimensions outside:	7,245 x 7,245 m inside glass panels 8,91 x 8,91 m with balcony
Cubage:	127,2 m ³
Total floor space:	49,7 m ²
Room height:	2,56 m
Total height:	5 m
Construction time:	70 days after production release
Price:	from € 190.000

The Fincube will be delivered turnkey to the customer (floor covering and ceiling lining, all connections and technique, bathrooms), without interior fitting and exclusive plot, costs for the installment and transportation costs. These costs are different and specific to the project.

According to the intended purpose, the size and interior fitting can vary.



The concept of temporariness

The mounting and installation of the Fincube requires a building license. This legal process is country-specific and depends on the legislation of the region, the commune or the canton.

With the concept of a temporary accommodation, the Fincube is ahead of the legislators of most of the countries.

Why do buildings have to be for good? Flexibility and mobility of today's society require new and temporary living concepts. Temporary living demands flexible and short-term rights of use.

Through temporary living arrangements, the use of plots and land for a limited period of time becomes possible. After its use the building is fully recyclable and the plot can be used for other purposes or returned to the nature.

But, the legal preconditions are required. In this field the Fincube will do pioneer work.

From the entrepreneurial point of view, land, which can be used and covered with buildings only for a limited period of time, can be interesting, for example for a hotel complex with Finubes.

After a few years of tourist facility use, the specific function of the Fincubes can be altered. The units can be sold or rented. They can easily be removed and reassembled at another plot. The minimal soil sealing makes this possible and enables the temporary use of land without harming the nature.

Temporary rights of use and building licenses make such concepts possible.

The sample house

The sample house is constructed as a living unit. The function panels are situated in the middle of the room, and the four areas, living room, kitchen, bedroom and bathroom, open up to the outside.

Accentuated formal purism shapes the furnishings of each room. The arrangement of the rooms is marked by simplicity and functionality and allows privacy as well as working space – without renouncing comfort.

Due to the special accessories and technical features the sample house matches the Fincube Premium as the high-end version.

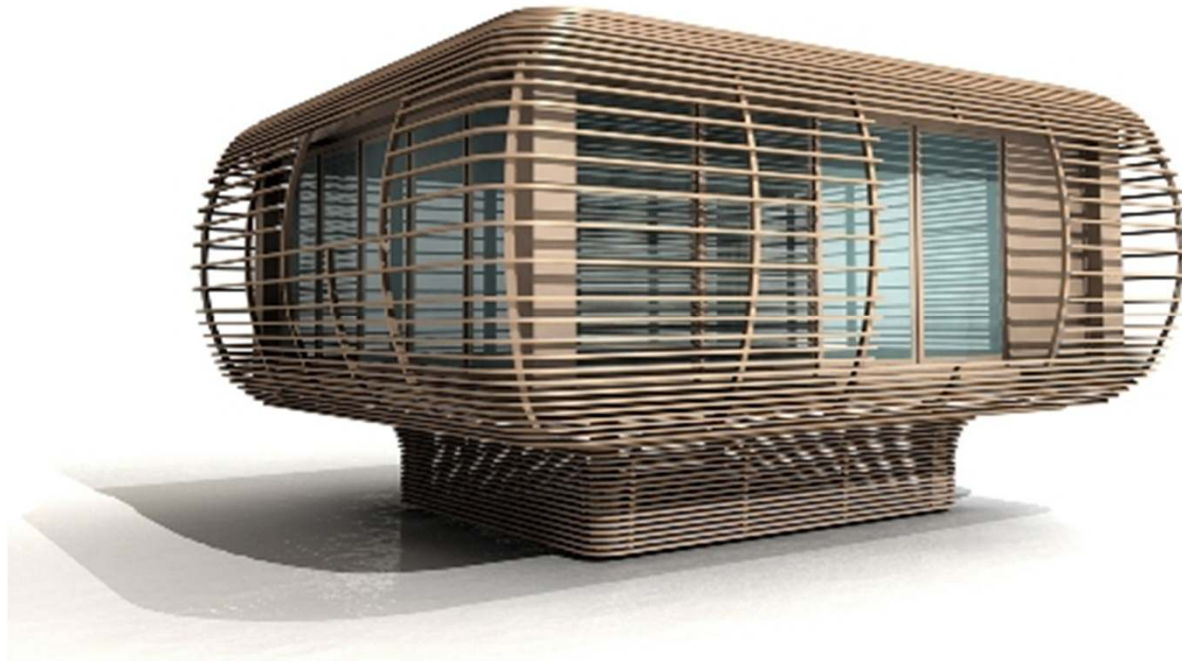
Location

Hauptstrasse 69
39050 Unterinn/Ritten (BZ)
Italy



The sample house - Factsheet

Dimensions outside:	8,91 m x 8,91 m (with balcony)
Dimensions outside:	7,245 m x 7,245 m (inside glass panels)
Total floor space:	49,7 m ²
Room height:	2,56 m
Total height :	5 m
Material supporting structure:	wood - larch
Material outside/slats:	wood - larch
Material inside:	wood - larch/stone pine
Glazing:	triple glazing U-value - 0,70 W/m ² K
Soil sealing:	< 2 m ² / 4 foundation points à 70 cm x 70 cm
Flat roof:	greened roof or PV system for electricity generation
Weight:	approx. 15.000 Kg



Fincube-Team

Already in its planning period, the Fincube project was building bridges – bridges between Berlin and South Tyrol, design and tradition, concept and realization. The result is a unique eco-house system, planned in Berlin, Germany and realized in the alps in Italy – the Fincube.

Designer Werner Aisslinger

Werner Aisslinger born 1964 – Designstudent at University of fine Arts Berlin - 1989-1992 Freelancer at Jasper Morrison and Ron Arad, London and Studio de Lucchi in Milan - 1993 Founding »studio aisslinger« in Berlin - 1994-1997 Teaching at UdK Berlin and Lahti Design Institute, Finland - 1998-2005 Professor for Product Design at „Staatliche Hochschule für Gestaltung“, Karlsruhe-Germany - 2003 Founding Member of Association Transform-Berlin e.V. - the Institution of the „Designmai“-Festival in Berlin - 2006 Projectmanager of Designlabor Bremerhafen, Germany - since 2006 permanent Curator of Raymond Loewy Foundation as well as the Jury of the Lucky Strike Design Award.

His work is exhibited in the permanent collections of international museums such as the Museum of Modern Art (MoMA) and the Metropolitan Museum in New York.

He works on product designs and architectural projects with brands like interlübke, Mercedes-Benz, adidas, IC-Berlin, Marc’o Polo, Bombay Sapphire, FSB, thonet, flötotto, berker, Hugo Boss i.e.

studio aisslinger, werner aisslinger, berlin

e-mail: studio@aisslinger.de

homepage: www.aisslinger.de



Contact

FINCUBE

Waltherplatz 8

I-39100 Bozen/Bolzano

Phone: +39 331 3531812

Phone:+49 151 521 822 11

info@fincube.eu

www.fincube.de

Produktion wood construction and cladding

Lobis Elements GmbH-srl

Zimmerei, Massivholzplatten, Leimbinder

Hauptstrasse 69

I-39050 Unterinn/Ritten

Production Interior fitting

Tischlerei Prast KGd. Matthias & Kurt Prast & Co.

Seestraße 2

I-39050 Unterinn/Ritten

Partner Companies



kvadrat

FORNASARIG

